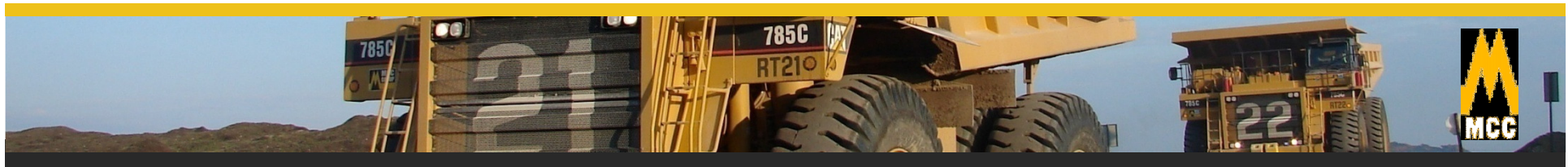


overview

The company was founded in 1972 and driven by determination and an uncompromising commitment to provide service and support excellence. Today it supports the largest earthmoving plant hire fleet servicing the civil engineering and earthmoving industries in Southern Africa.

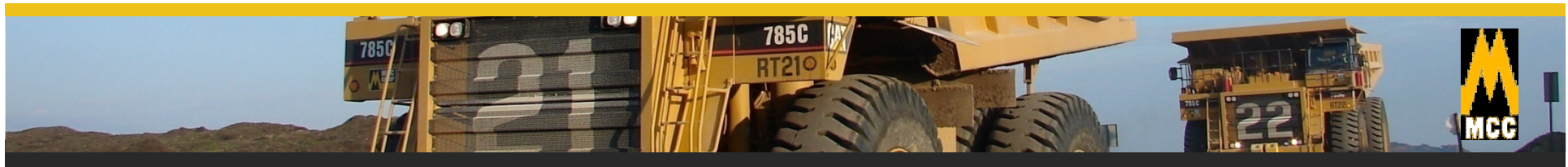
The mining operations began in 1986 and are industry leaders in hard rock mining, environmental mining and planning, materials handling, bulk earthworks and ground rehabilitation.



operating strategy

MCC believes that, in order to maintain the highest level of service delivery, they must:

- *Maintain sustainability through correct project pricing*
- *Maintain production levels at all times*
- *Focus on machine care (maintenance)*
- *Create a settled workforce (low turnover of staff)*
- *Make safety a way of living, not a restriction*
- *Work with client in order to create a lasting partnership*



products

Open cast mining contractors

Platinum, Iron Ore and other base metals

In-depth project planning, rehabilitation, hard rock mining and ore recovery

Plant hire

Distinct culture to commitment to service excellence

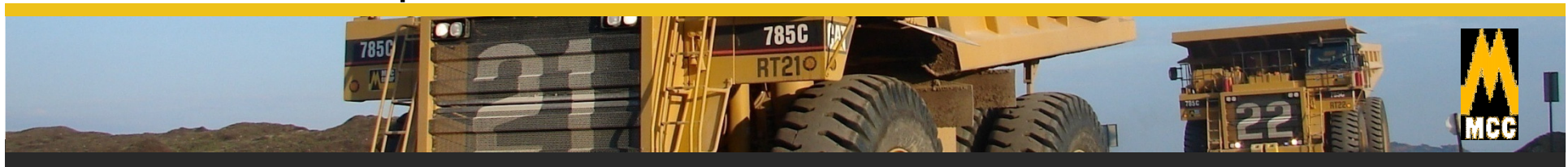
Supplies pristine plant maintained and serviced by qualified field service mechanics and world class workshop and rebuild facility

Drilling and Blasting

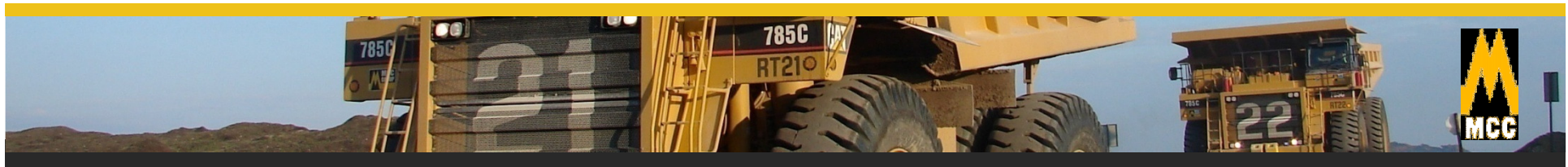
Specialises in surface mining blasting

Capable of loading anfo's, emulsions and heavy anfo blends to the opencast mining and quarry industry

Provides full range of packaged explosives, blasting accessories and pyrotechnic/electronic initiation systems to suite requirements

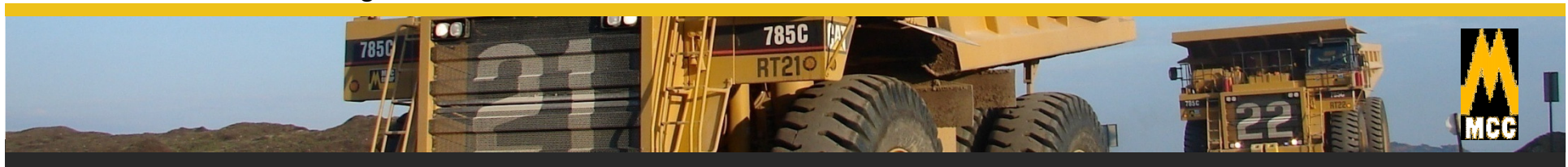


- Open cast mining contractors
 - Operating at 8 sites in South Africa & Mozambique
- Plant hire
 - Strategically located throughout South Africa with 12 branches
- Drilling and Blasting
 - Working exclusively for contract mining



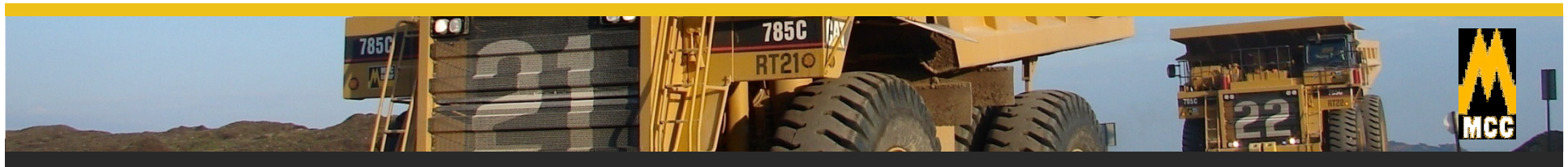
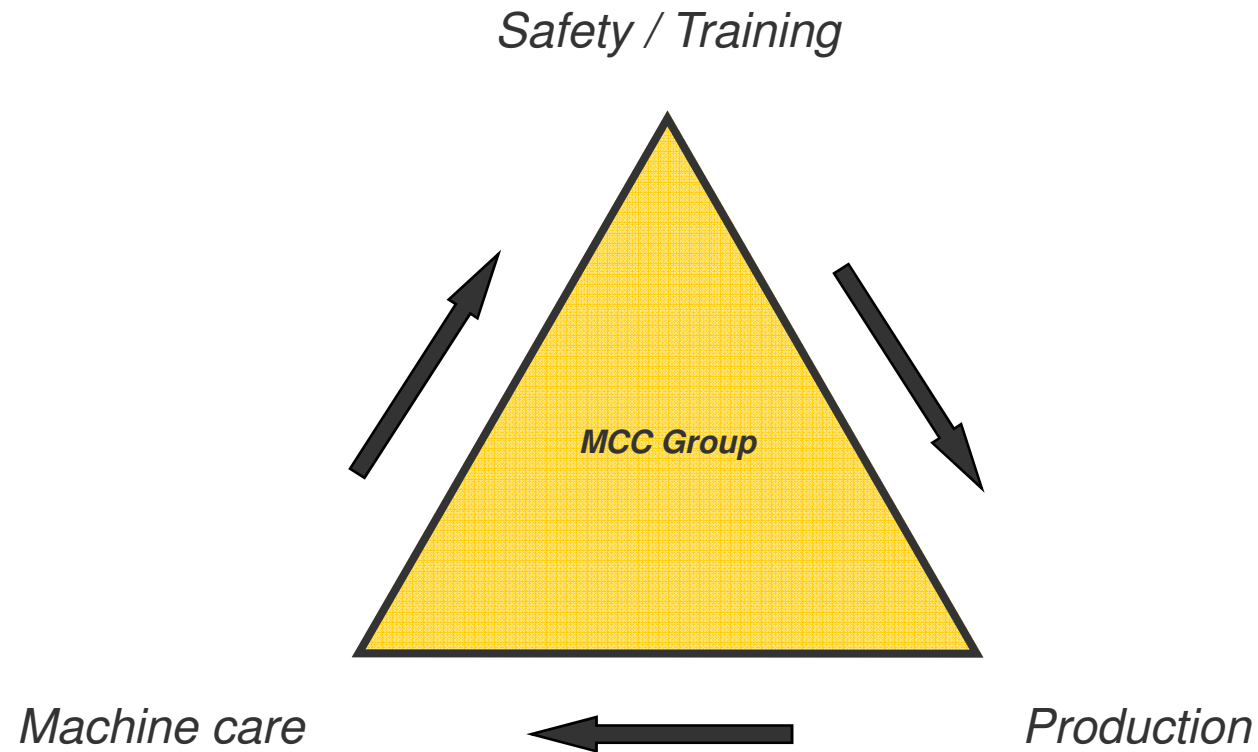
size

- Total fleet of approximately 2 000 units
- Includes approximately 1 200 revenue earning units
- Major items include:
 - 18 - Liebherr 250t / 340t Excavators
 - 22 - Liebherr 125t Excavators
 - 80 – 150t rigid dump trucks
 - 130 – 100t rigid dump trucks
 - 37 – D10 / D11 dozers
 - 9 – 992 / 993 Front end loaders
 - 234 – Articulated dump trucks
 - 10 – 16M Graders
 - 118 – 140 Graders
 - 26 Drill rigs



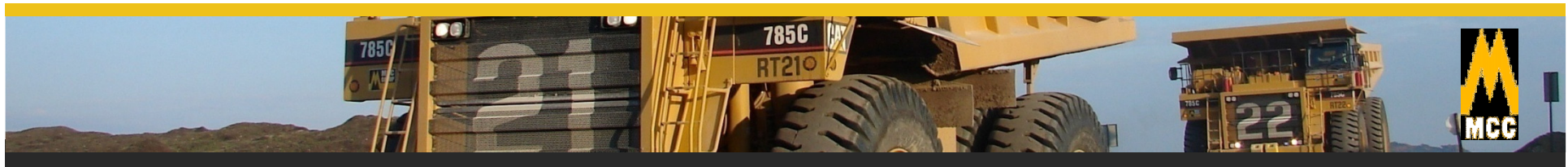
operating philosophy

Company is based on 3 core elements:



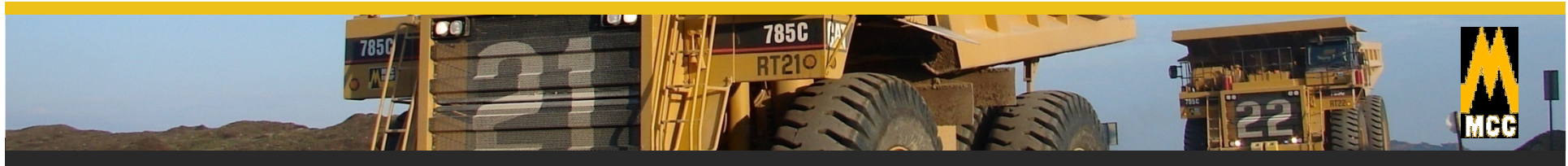
replacement policy

- *MCC believes in a new / well maintained fleet in order to achieve maximum productivity*
- *MCC does not acquire second-hand equipment*
- *Replacement policy:*
 - *Medium Excavators on 15 000 hours*
 - *Rigid Trucks - until economically unviable; mid-life from 10 000 hours*
- *Depreciation*
 - *Conservative*
 - *Straight line to hourly planned for 2011*
 - *Useful life remains consistent*
 - *Biannual residual testing*
 - *Disposals profits achieved*



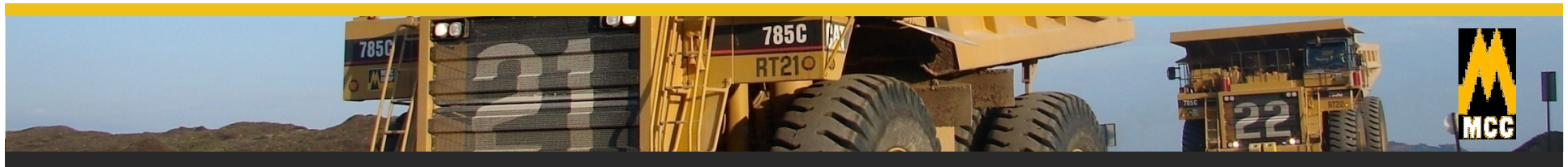
maintenance strategy

- *MCC practices a preventative maintenance strategy*
- *Machine care is viewed as one of the core ingredients in order to maintain sustainability*
- *Preventative maintenance includes:*
 - *Daily service for all equipment in specialized workshops*
 - *Component replacement before failure – mid life*
 - *Focus on high level road maintenance to prevent machine failure*
 - *Enough trained staff on site to maintain high level of focus*
 - *Additional daily 3 hour maintenance and servicing break*



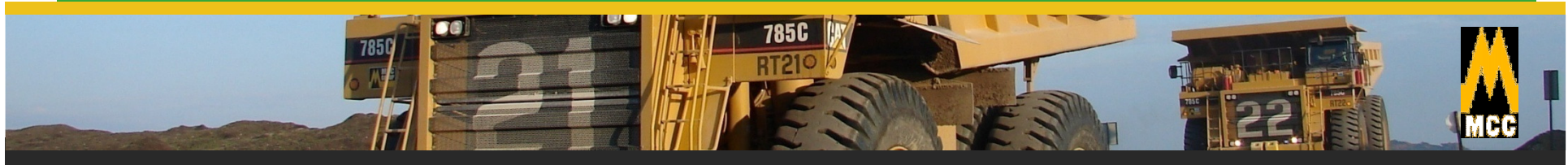
skills development training

- *MCC Group operates their own formal training centre*
- *The MCC training centre is fully accredited by:*
 - *Construction SETA – NQF level 3*
 - *Services SETA – NQF level 4*
 - *Independent Examinations Board (ABET level 4)*
- *Training centre includes Moderators and Assessors*
- *On site training facilities includes:*
 - *Simulators with instructors*
 - *Classrooms and teachers to accommodate learners during shift*
- *Evaluating MQA accreditation*



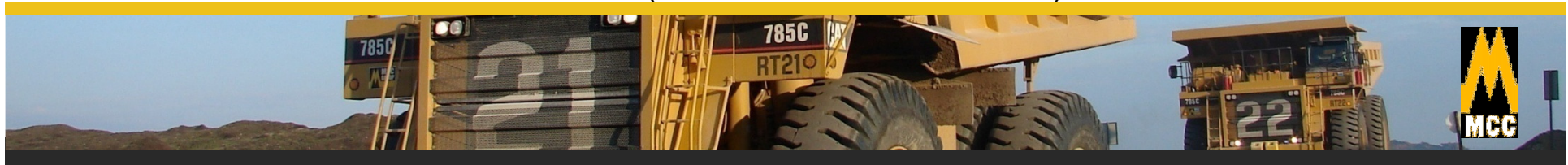
mining projects

Customer	Mineral	Location	Monthly volumes	End date
Xstrata Base Metals - Eland Platinum Mine	Platinum	Brits, North West	580 000 m ³	12/2011
Aquarius Platinum - Marikana Mine	Platinum	Rustenburg, North West	150 000m ³	12/2010
Arm/Norilsk Joint Venture - Nkomati Mine	Nickel	Machadodorp, Mpumalanga	1 100 000m ³	08/2014
Platmin - Pilanesberg Platinum Mine	Platinum	Northam, North West	1 700 000m ³	03/2013
Riversdale - Benga Mine	Coal	Tete, Mozambique	2 500 000m ³	03/2015
Tharisa Minerals	Chrome sample	Marikana, North West	120 000m ³	09/2014
DMO Project	Coal	Witbank, Mpumalanga	1 300 000m ³	05/2012
Khutala	Coal	Ogies, Mpumalanga	1 100 000m ³	04/2013
Coal of Africa - Vele Colliery	Coal	Musina, Limpopo	700 000m ³	02/2015
Coal of Africa - Mahkhado Bulk sample	Coal	Makhado, Limpopo	60 000m ³	06/2011
Arm/Norilsk Joint Venture - Nkomati Mine	Drilling	Machadodorp, Mpumalanga		08/2014



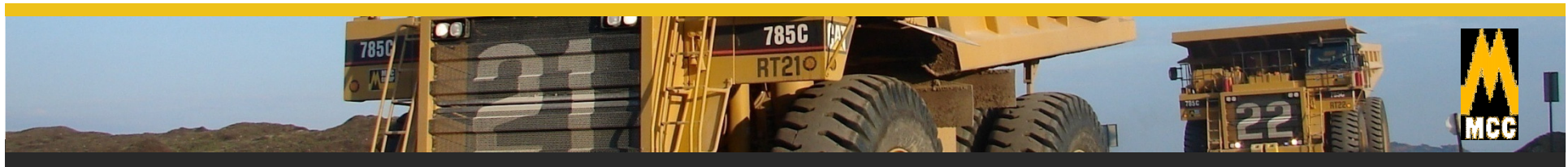
Benga update

- Equipment on site
 - Liebherr 9350
 - 4 x CAT 777
 - 2 x CAT 793 (no tyres)
 - 2 x Liebherr Cranes
- People
 - Management x 4
 - International Operators x 20 (in training)
 - Training simulators x 2
- Establishing site operations (workshops)
- Production in Dec / Jan (small volumes and soft)



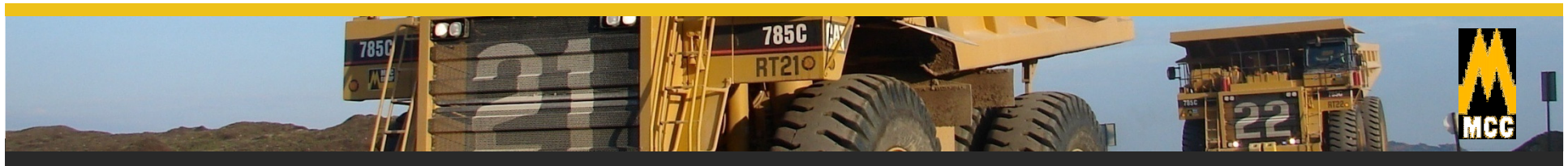
plant hire

- Target market is
 - Infrastructure development
 - Government
 - Construction and
 - Mining
- Largest fleet of 140 graders in Africa
- New branch currently being established in Tete – Mozambique



opportunities

- Contract mining
 - PGM's (Platinum and Chrome)
 - Coal
 - Gold
 - Uranium
- Plant hire
 - Power stations



Thank you

